



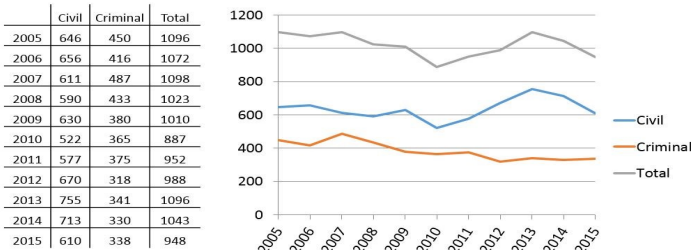
DISTRICT OF MONTANA QUARTERLY NEWSLETTER



VOLUME 6, ISSUE 1, JANUARY 2016

FILINGS DOWN FROM 2014

District Court Case Filings Calendar Year 2005 - 2015



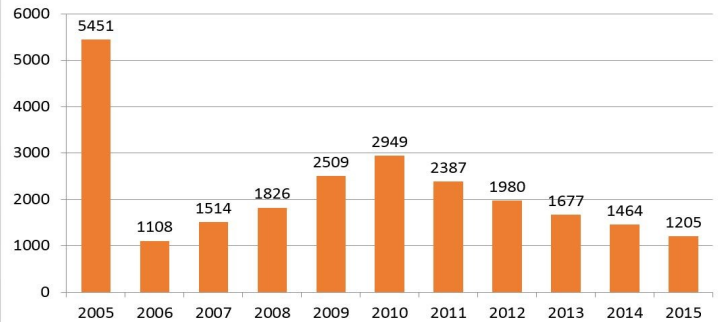
Civil Filings
↓ 14.4 %
From 2014

Criminal Filings
↑ 2.4 %
From 2014

Total Filings
↓ 9.1 %
From 2014

2015 Year-End Statistical Review

Bankruptcy Court Filings Calendar Year 2005-2015



2015 Year-End Statistical Review

COMING SOON!!

The U.S. District and Bankruptcy Courts for the District of Montana will be launching new and improved websites in early February. The Courts' goals are to provide uniformity to attorneys and the public when searching for content at the local and national level.

ATTENTION CJA ATTORNEYS

Rates

Effective January 1, 2016, non-capital hourly compensation rates increased from \$127 to \$129. Capital hourly rates increased from \$181 to \$183. Mileage rates also changed from \$.575 to \$.54. The eVoucher database has been updated to reflect the changes to compensation, mileage and maximum compensation levels.

eVoucher

For security reasons, CJA users will be asked to change their eVoucher passwords. The password requirements are as follows:

- A minimum of 8 characters
- One upper and one lower case letter
- One special character

If you need assistance, please contact Pam Cunningham at: (406) 497-1241.

NEW COURTROOM TECHNOLOGY

We have exciting news regarding our Butte courtroom. After many years of sound issues and replacing failed components, we are refreshing our courtroom technology with new state of the art equipment. The technology refresh will improve the audio and video capabilities, and will move us towards standardizing our courtroom technology capabilities in our courtrooms across the district. Our goal is to provide the same experience to our operators and users regardless of the location.

The refresh is scheduled to be completed on January 22, 2016.

COURT REGISTRY FUNDS

The district court will be implementing a new tool for managing court registry funds during the first quarter of 2016. Court Registry Investment System or CRIS has been in operation since 1988 and has been managed by the Administrative Office of the U.S. Courts since 2011. CRIS ensures the safety of the principal investment while providing sufficient liquidity, reduced administrative costs and market rate earnings. **Please refer to Local Rule 67 (Deposit Into Court) for further details regarding deposits with the court.**

District Court Clerk's Offices

Billings: 247-7000 Great Falls: 727-1922
Butte: 497-1279 Helena: 441-1355
Missoula: 542-7260



Bankruptcy Court Clerk's Office

Butte: 497-1240