



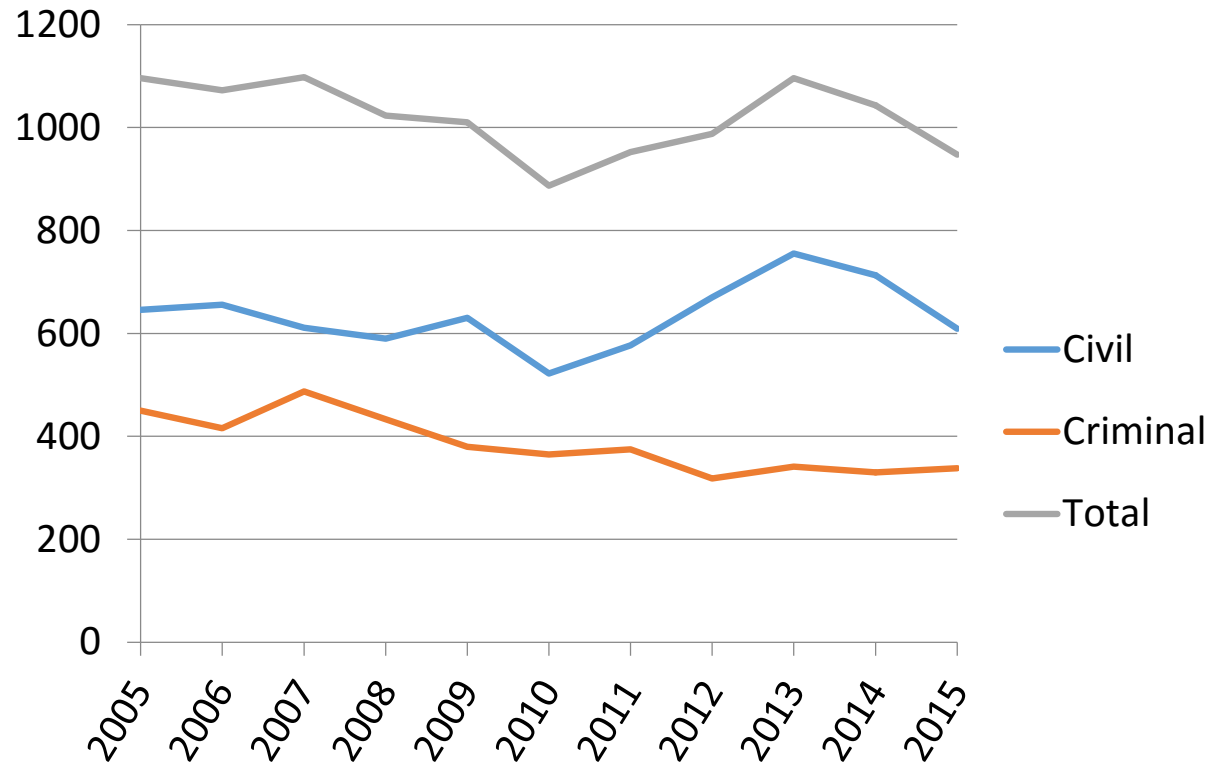
# 2015 Year-End Statistical Report


District of Montana  
District Court | Bankruptcy Court


# District Court Case Filings


Calendar Year 2005 - 2015

	Civil	Criminal	Total
2005	646	450	1096
2006	656	416	1072
2007	611	487	1098
2008	590	433	1023
2009	630	380	1010
2010	522	365	887
2011	577	375	952
2012	670	318	988
2013	755	341	1096
2014	713	330	1043
2015	610	338	948



Civil Filings  
 **14.4 %**  
 From 2014

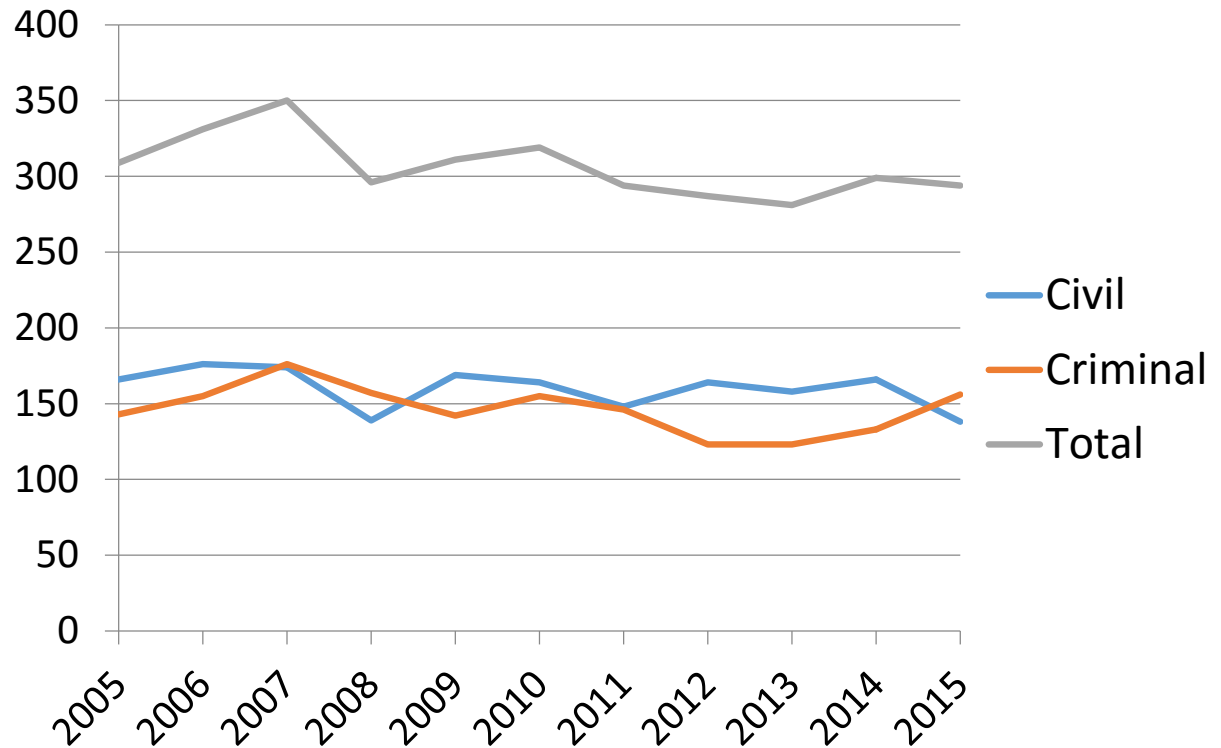
Criminal Filings  
 **2.4%**  
 From 2014


Total Filings  
 **9.1%**  
 From 2014


# Billings Division District Court Case Filings


## Calendar Year 2005 - 2015

	Civil	Criminal	Total
2005	166	143	309
2006	176	155	331
2007	174	176	350
2008	139	157	296
2009	169	142	311
2010	164	155	319
2011	148	146	294
2012	164	123	287
2013	158	123	281
2014	166	133	299
2015	138	156	294



Civil Filings  
 **16.8 %**  
 From 2014

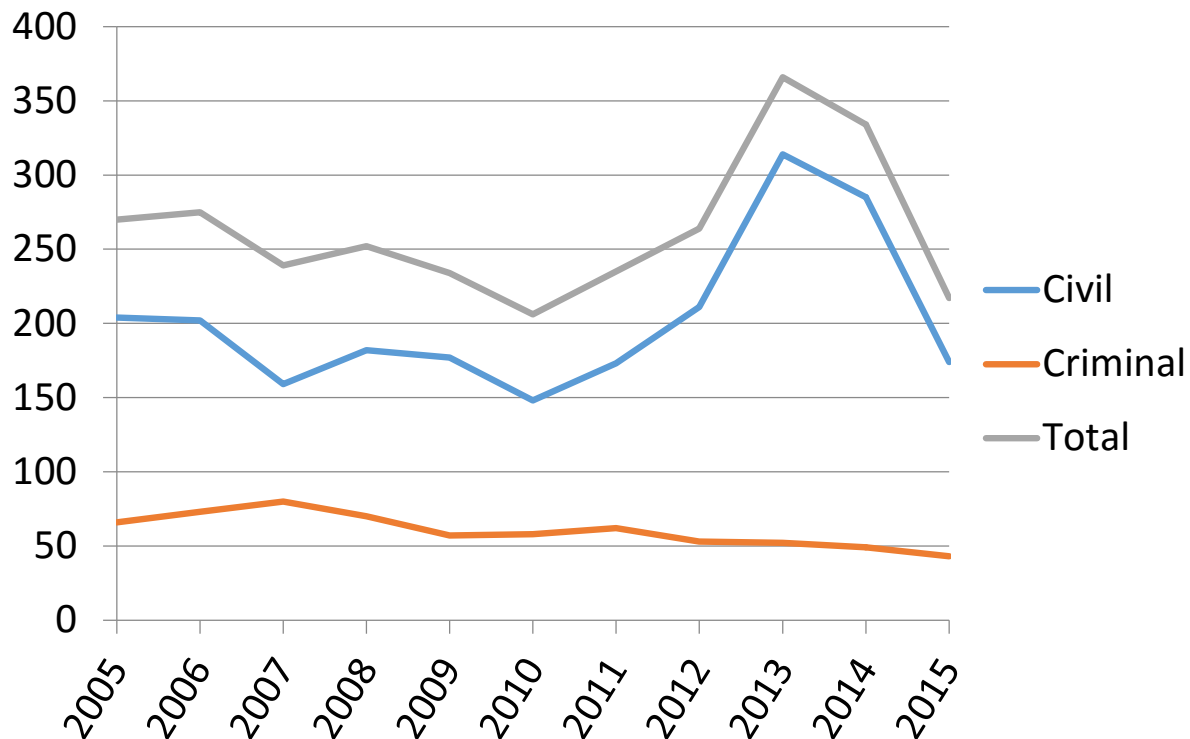
Criminal Filings  
 **17.3%**  
 From 2014

Total Filings  
 **1.7%**  
 From 2014

# Missoula Division District Court Case Filings

## Calendar Year 2005 - 2015

	Civil	Criminal	Total
2005	204	66	270
2006	202	73	275
2007	159	80	239
2008	182	70	252
2009	177	57	234
2010	148	58	206
2011	173	62	235
2012	211	53	264
2013	314	52	366
2014	285	49	334
2015	174	43	217



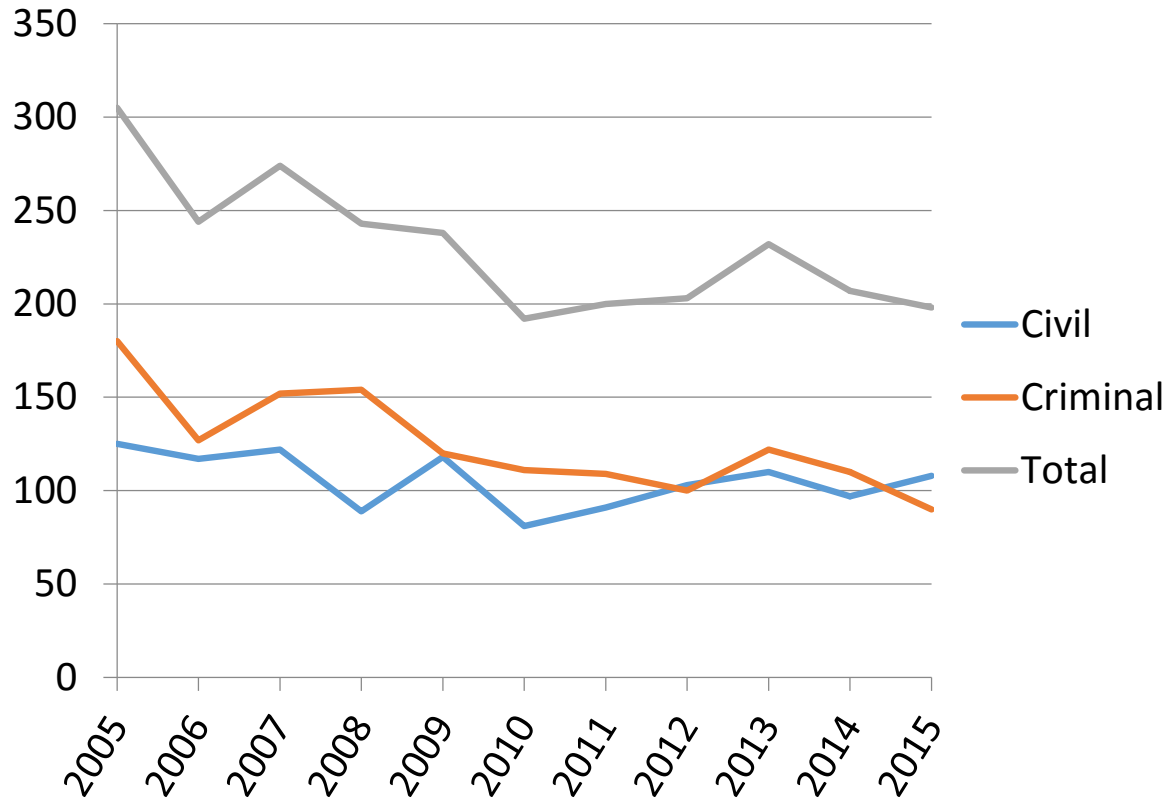
Civil Filings  
**↓ 38.9 %**  
 From 2014


Criminal Filings  
**↓ 12.2%**  
 From 2014


Total Filings  
**↓ 35%**  
 From 2014


# Great Falls Division District Court Case Filings Calendar Year 2005 - 2015

	Civil	Criminal	Total
2005	125	180	305
2006	117	127	244
2007	122	152	274
2008	89	154	243
2009	118	120	238
2010	81	111	192
2011	91	109	200
2012	103	100	203
2013	110	122	232
2014	97	110	207
2015	108	90	198



Civil Filings  
 **11.3 %**  
 From 2014

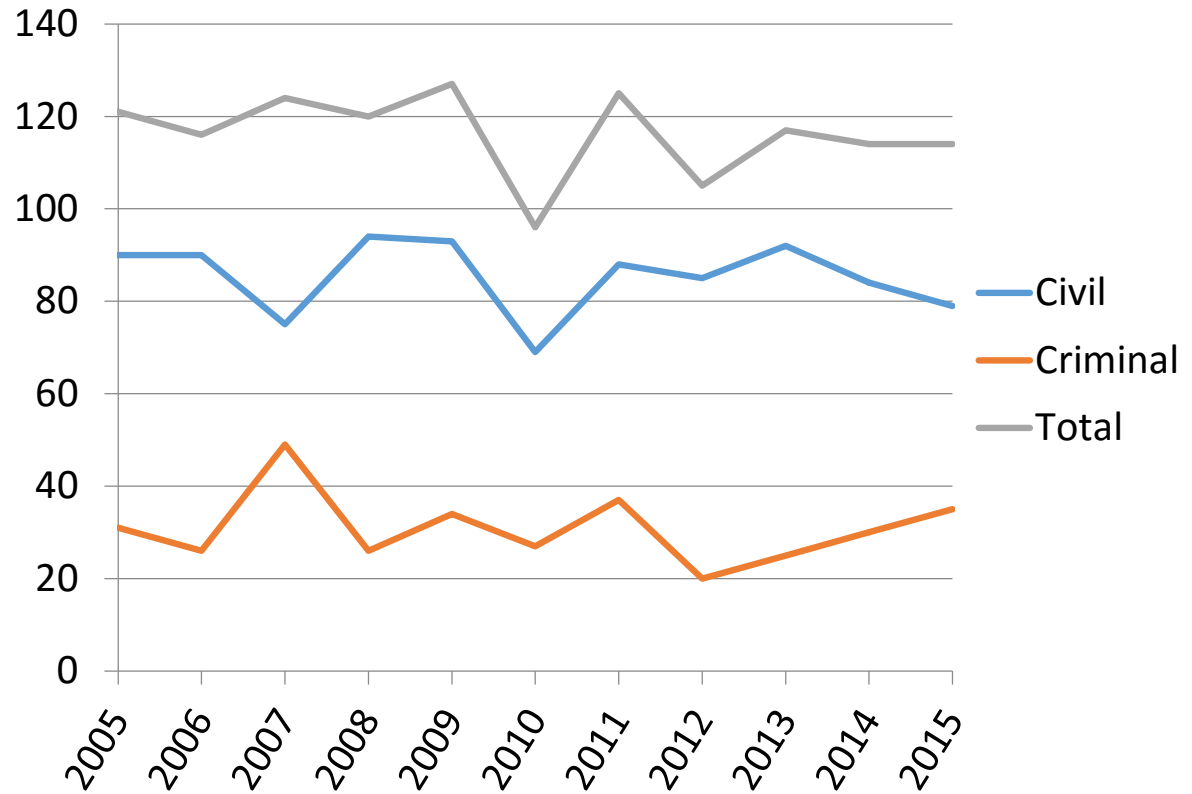
Criminal Filings  
 **18.2%**  
 From 2014

Total Filings  
 **4.3%**  
 From 2014

# Butte Division District Court Case Filings

## Calendar Year 2005 - 2015

	Civil	Criminal	Total
2005	90	31	121
2006	90	26	116
2007	75	49	124
2008	94	26	120
2009	93	34	127
2010	69	27	96
2011	88	37	125
2012	85	20	105
2013	92	25	117
2014	84	30	114
2015	80	35	115



Civil Filings  
**↓ 4.76 %**  
 From 2014

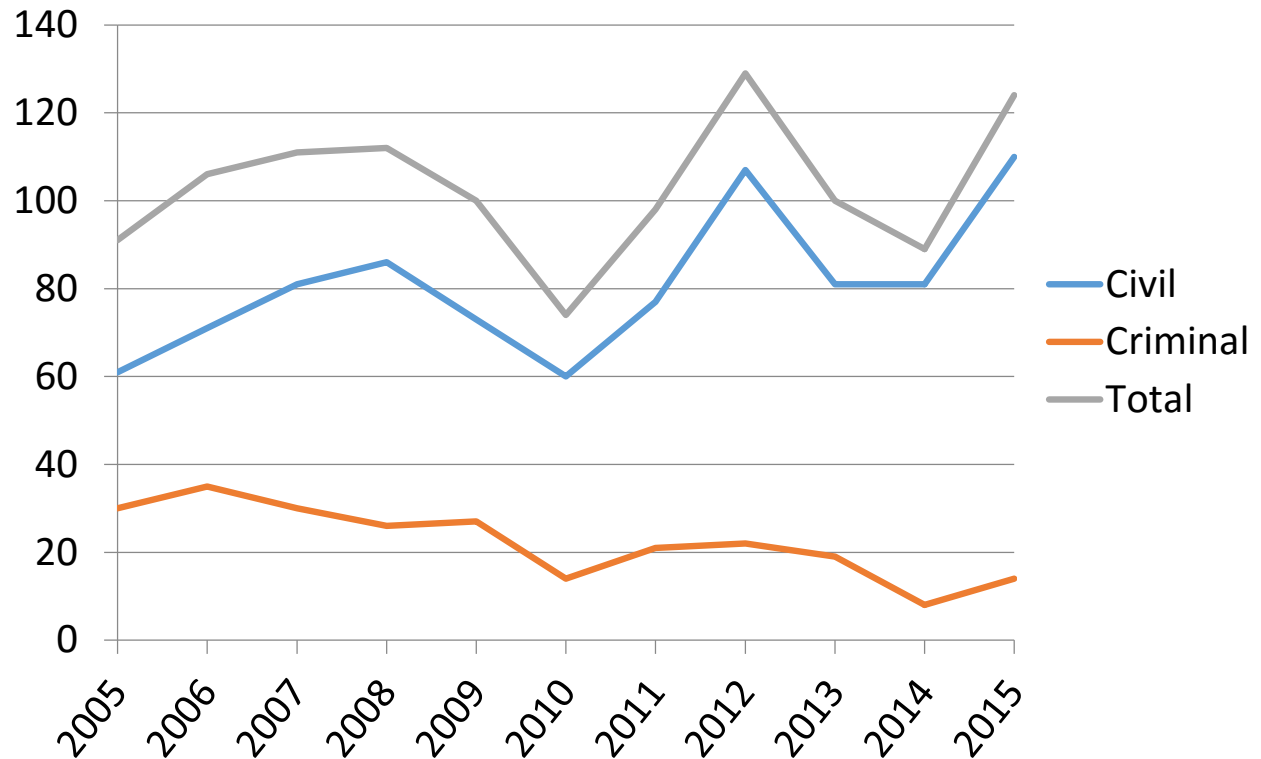
Criminal Filings  
**↑ 16.6%**  
 From 2014

Total Filings  
**↑ 0.87%**  
 From 2014

# Helena Division District Court Case Filings

## Calendar Year 2005 - 2015

	Civil	Criminal	Total
2005	61	30	91
2006	71	35	106
2007	81	30	111
2008	86	26	112
2009	73	27	100
2010	60	14	74
2011	77	21	98
2012	107	22	129
2013	81	19	100
2014	81	8	89
2015	110	14	124



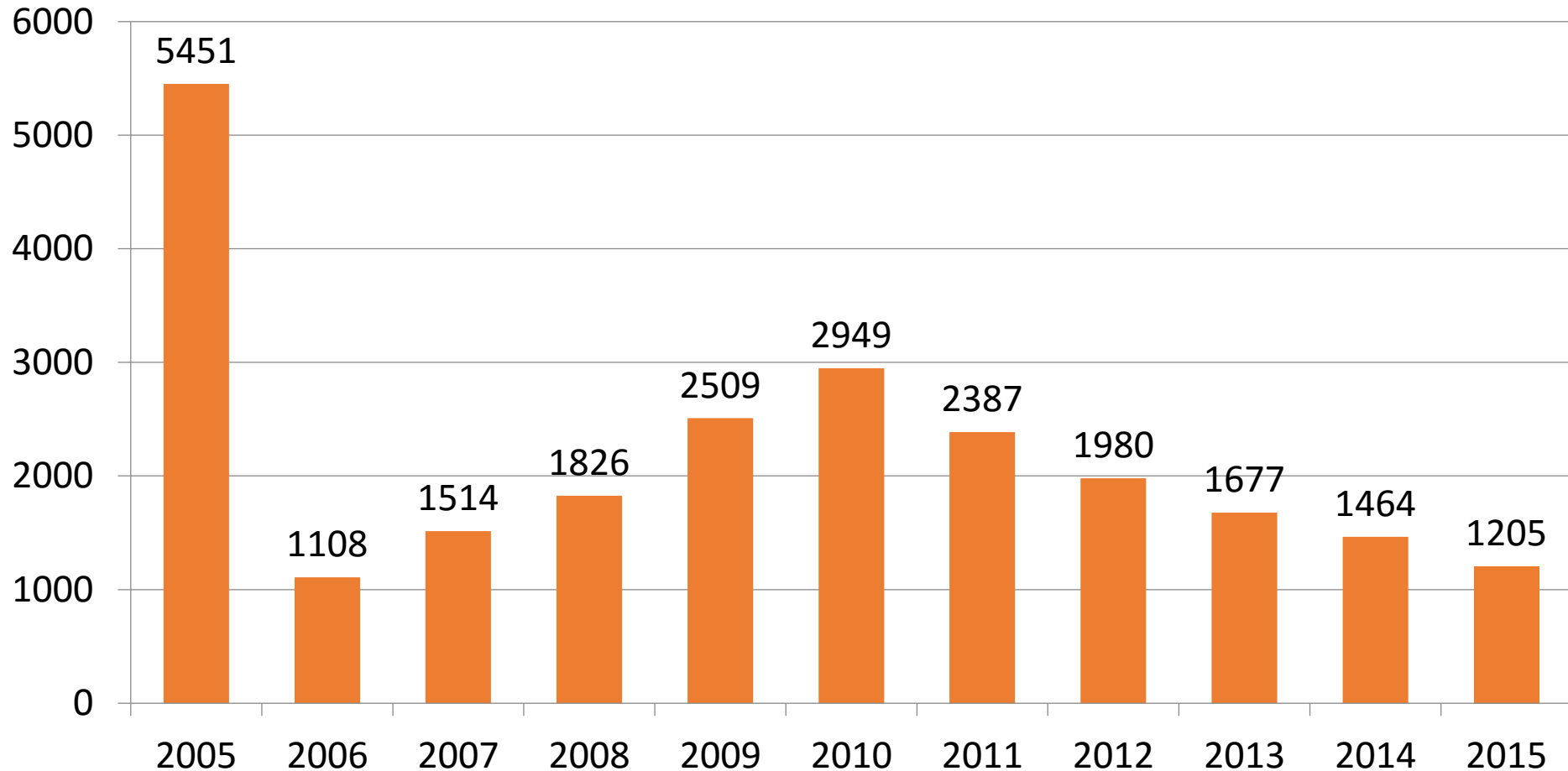
Civil Filings  
 ↑ 35.8 %  
 From 2014

Criminal Filings  
 ↑ 75%  
 From 2014

Total Filings  
 ↑ 39.3%  
 From 2014

# Bankruptcy Court Filings

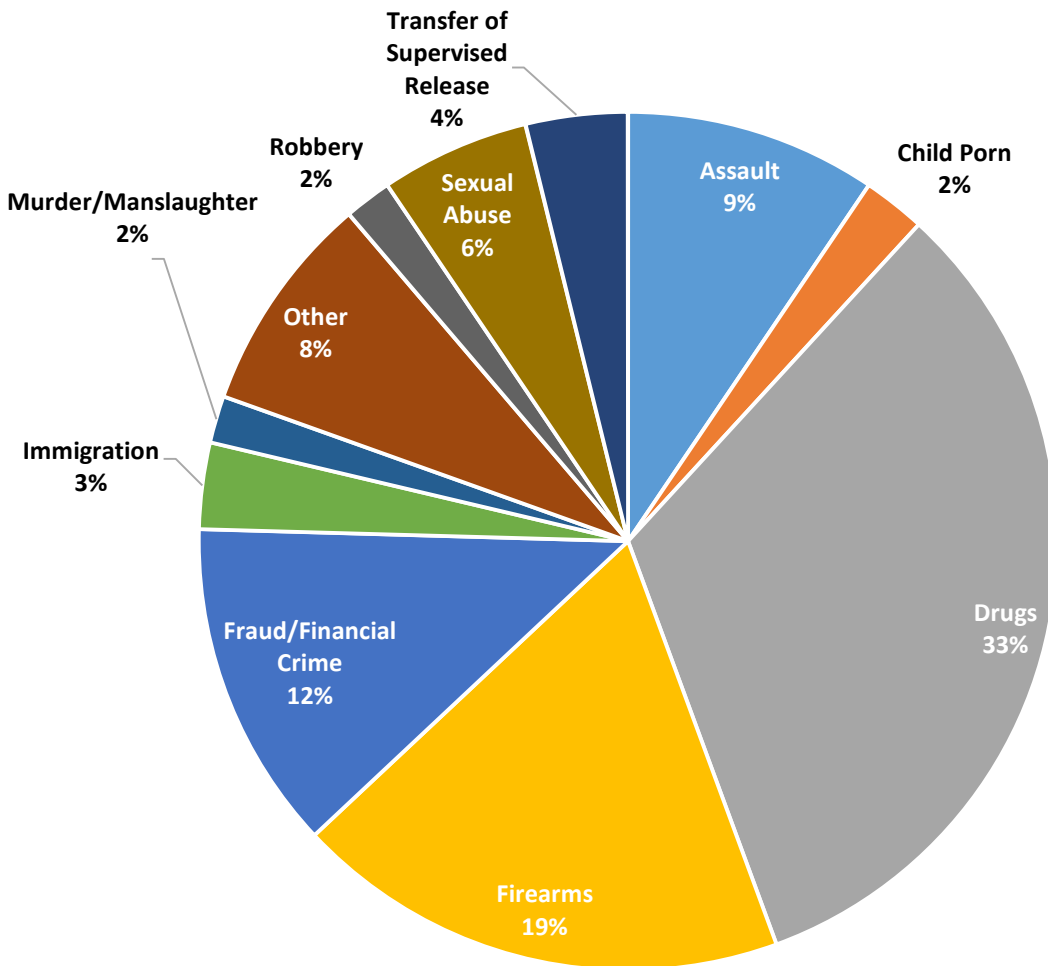
Calendar Year 2005-2015





# District of Montana Criminal Case Composition

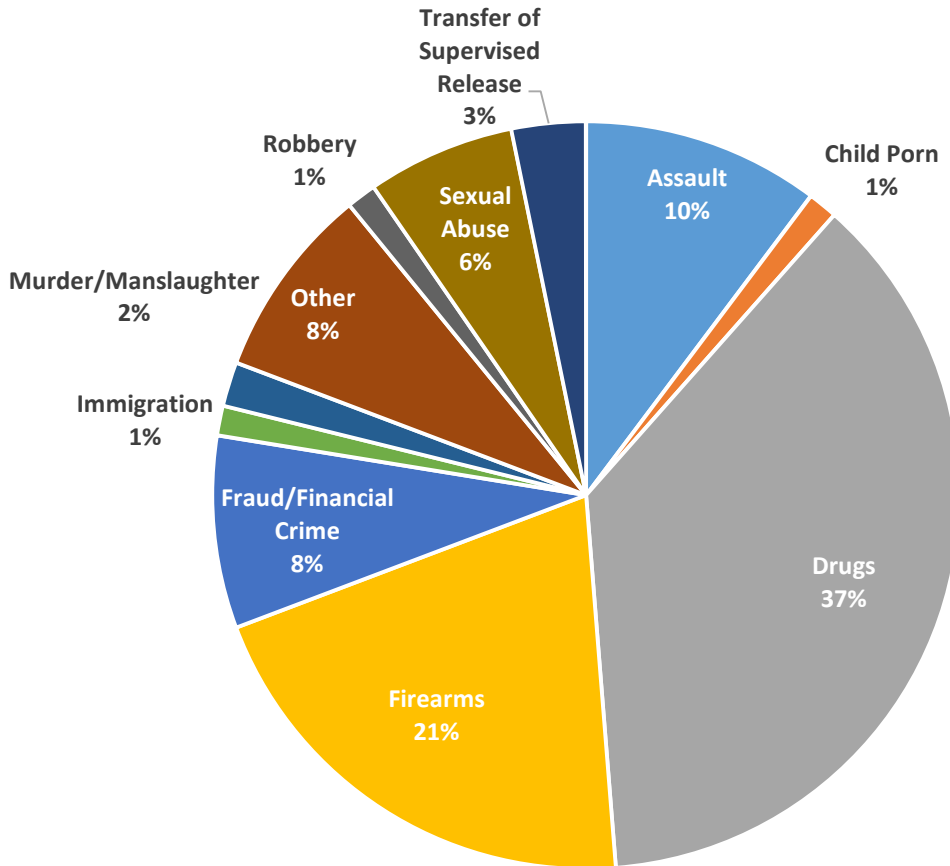
Calendar Year 2015



	# of Cases	%
Drugs	110	33%
Firearms	63	19%
Fraud/Financial Crime	42	12%
Assault	32	9%
Other	28	8%
Sexual Abuse	19	6%
Transfer of Supervised Release	13	4%
Immigration	11	3%
Child Porn	8	2%
Murder/Manslaughter	6	2%
Robbery	6	2%
<b>Total Cases</b>	<b>338</b>	

# Billings - Criminal Case Composition

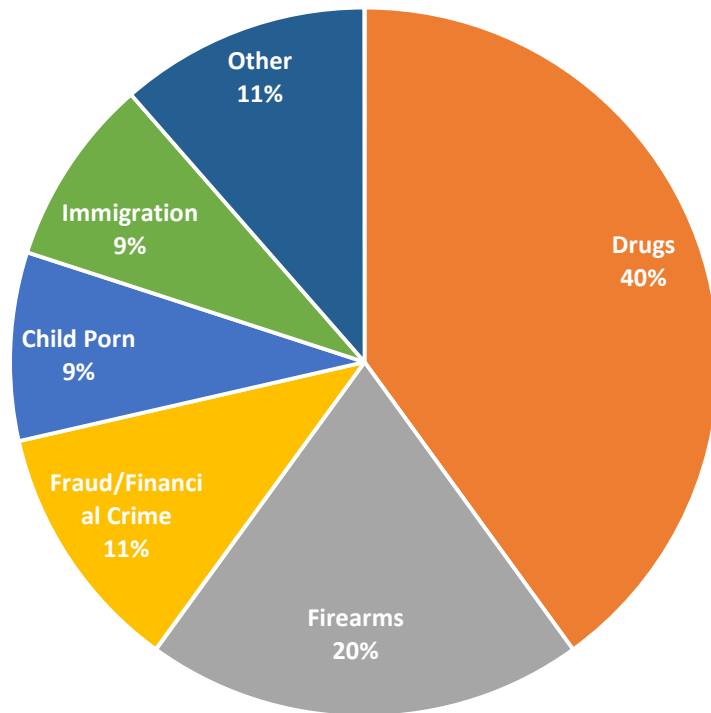
Calendar Year 2015



	# of Cases	%
Drugs	58	37%
Firearms	32	21%
Assault	16	10%
Fraud/Financial Crime	13	8%
Other	13	8%
Sexual Abuse	10	6%
Transfer of Supervised Release	5	3%
Murder/Manslaughter	3	2%
Child Porn	2	1%
Immigration	2	1%
Robbery	2	1%
Total Cases	156	

# Butte - Criminal Case Composition

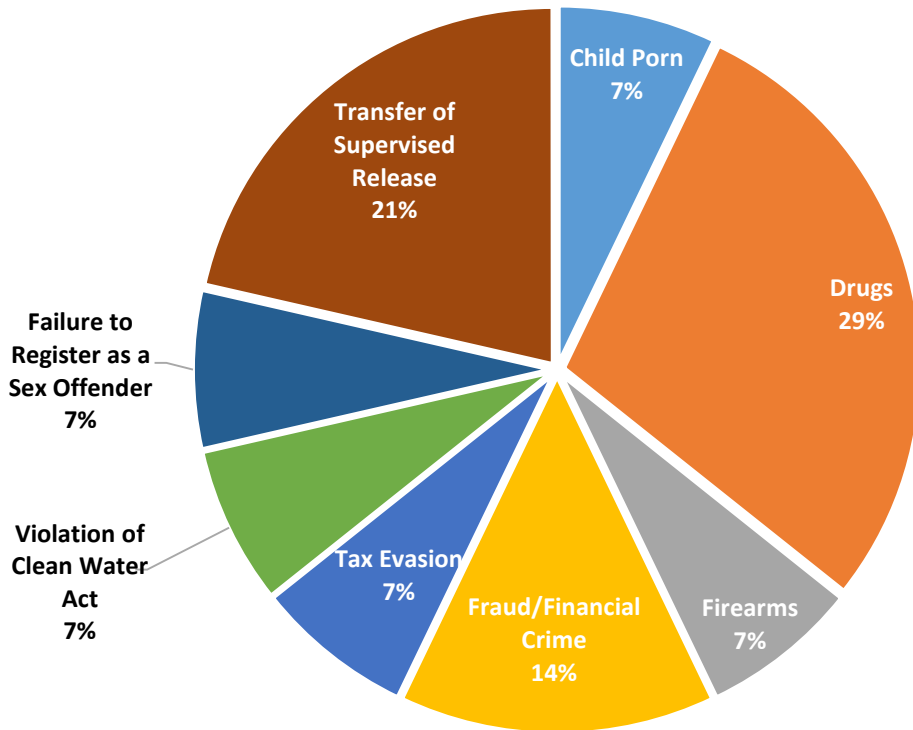
Calendar Year 2015



	# of Cases	%
Drugs	14	40%
Firearms	7	20%
Fraud/Financial Crime	4	11%
Other	4	11%
Child Porn	3	9%
Immigration	3	9%
Total Cases	35	

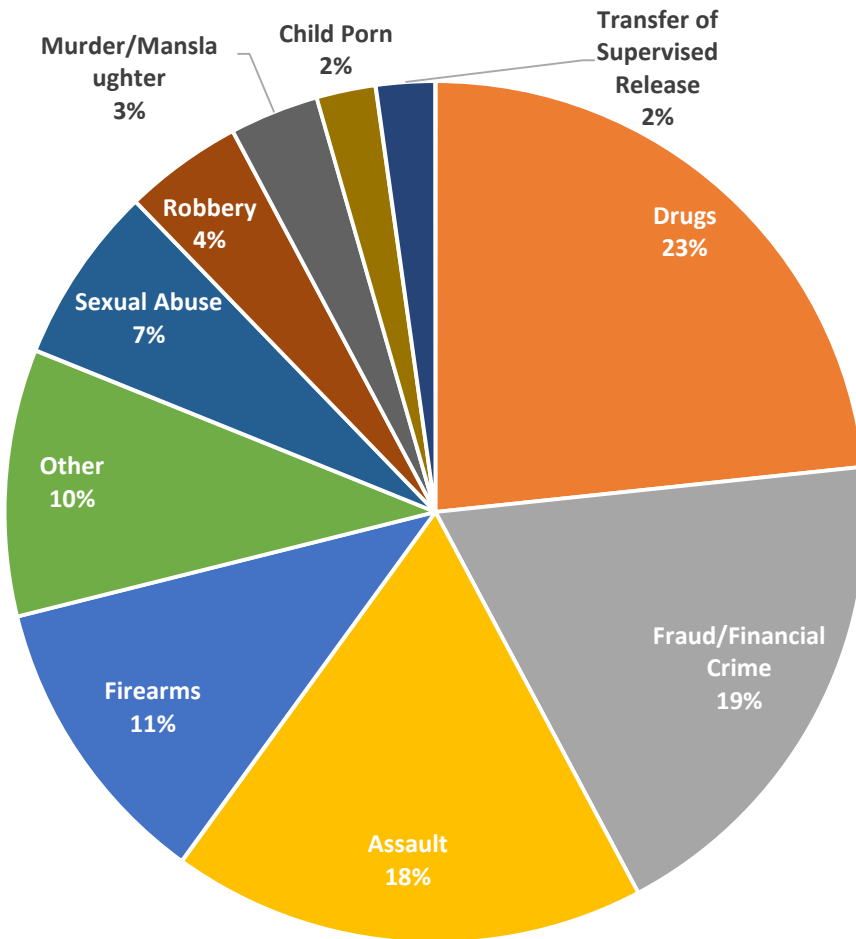
# Helena - Criminal Case Composition

Calendar Year 2015



	# of Cases	%
Drugs	4	29%
Transfer of Supervised Release	3	21%
Fraud/Financial Crime	2	14%
Child Porn	1	7%
Firearms	1	7%
Tax Evasion	1	7%
Violation of Clean Water Act	1	7%
Failure to Register as a Sex Offender	1	7%
Total Cases	14	

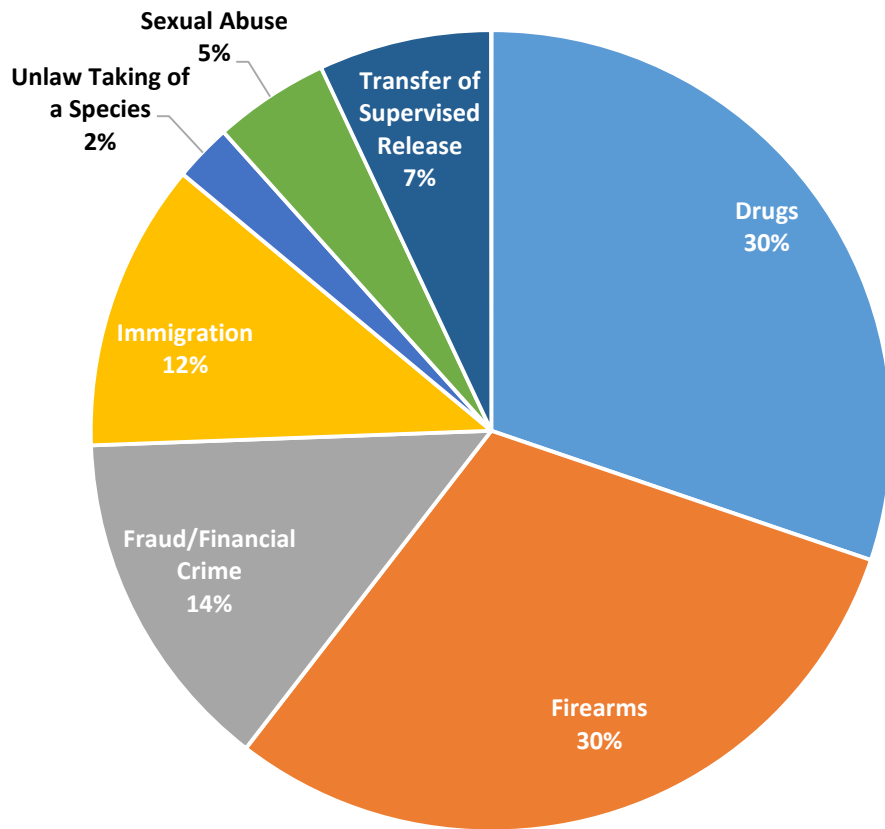
# Great Falls Criminal Case Composition Calendar Year 2015



	# of Cases	%
Drugs	21	23%
Fraud/Financial Crime	17	19%
Assault	16	18%
Firearms	10	11%
Other	9	10%
Sexual Abuse	6	7%
Robbery	4	4%
Murder/Manslaughter	3	3%
Child Porn	2	2%
Transfer of Supervised Release	2	2%
Total Cases	90	

# Missoula - Criminal Case Composition

Calendar Year 2015

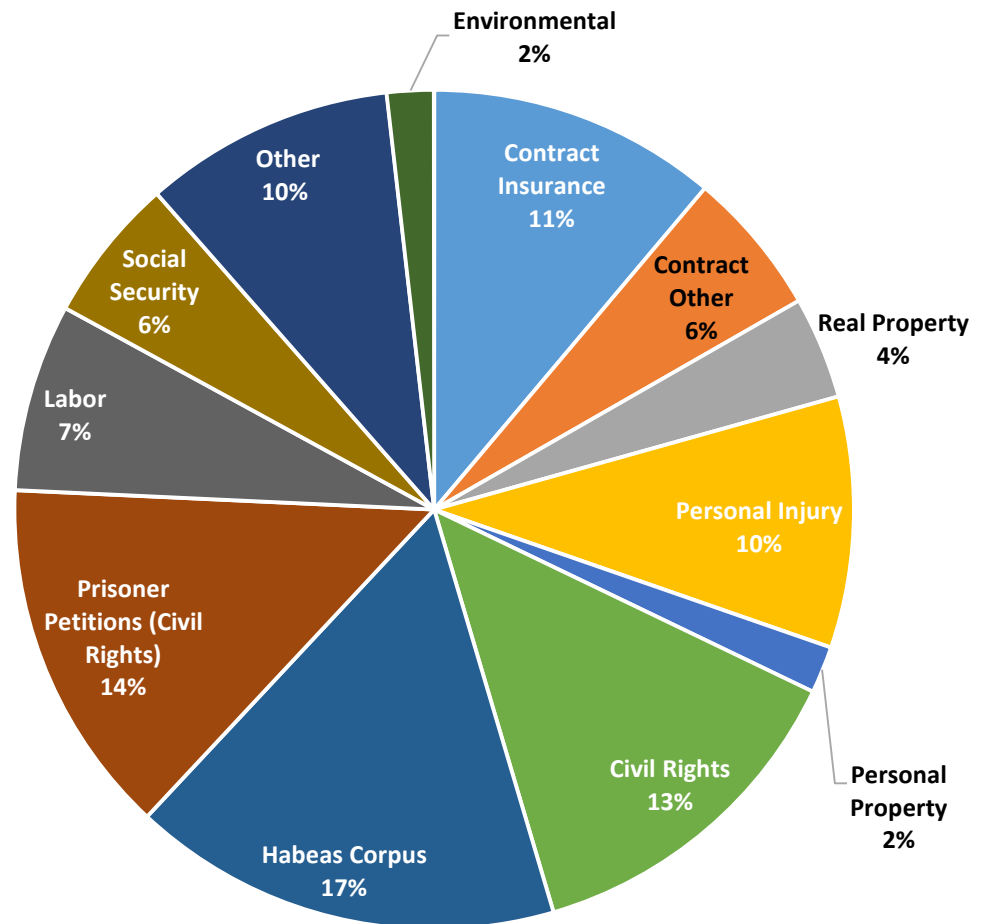


	# of Cases	%
Drugs	13	30%
Firearms	13	30%
Fraud/Financial Crime	6	14%
Immigration	5	12%
Unlaw Taking of a Species	1	2%
Sexual Abuse	2	5%
Transfer of Supervised Release	3	7%
Total Cases	43	

# District of Montana Civil Case Composition

## Calendar Year 2015

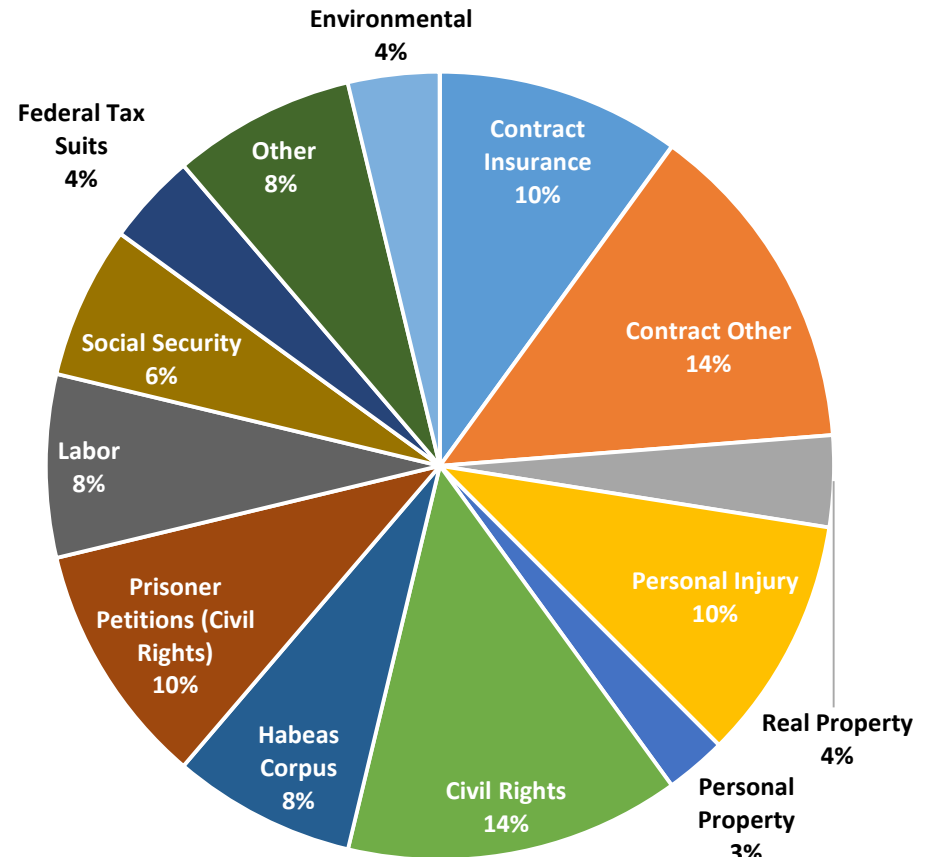
	# of Cases	%
Habeas Corpus	101	17%
Prisoner Petitions (Civil Rights)	84	14%
Civil Rights	81	13%
Contract Insurance	68	11%
Personal Injury	59	10%
Other	59	10%
Labor	44	7%
Contract Other	34	6%
Social Security	34	6%
Real Property	24	4%
Personal Property	11	2%
Environmental	11	2%
Total Cases	610	



# Butte - Civil Case Composition

## Calendar Year 2015

	# of Cases	%
Contract Other	11	14%
Civil Rights	11	14%
Contract Insurance	8	10%
Personal Injury	8	10%
Prisoner Petitions (Civil Rights)	8	10%
Habeas Corpus	6	8%
Labor	6	8%
Other	6	8%
Social Security	5	6%
Real Property	3	4%
Federal Tax Suits	3	4%
Environmental	3	4%
Personal Property	2	3%
Total Cases	80	

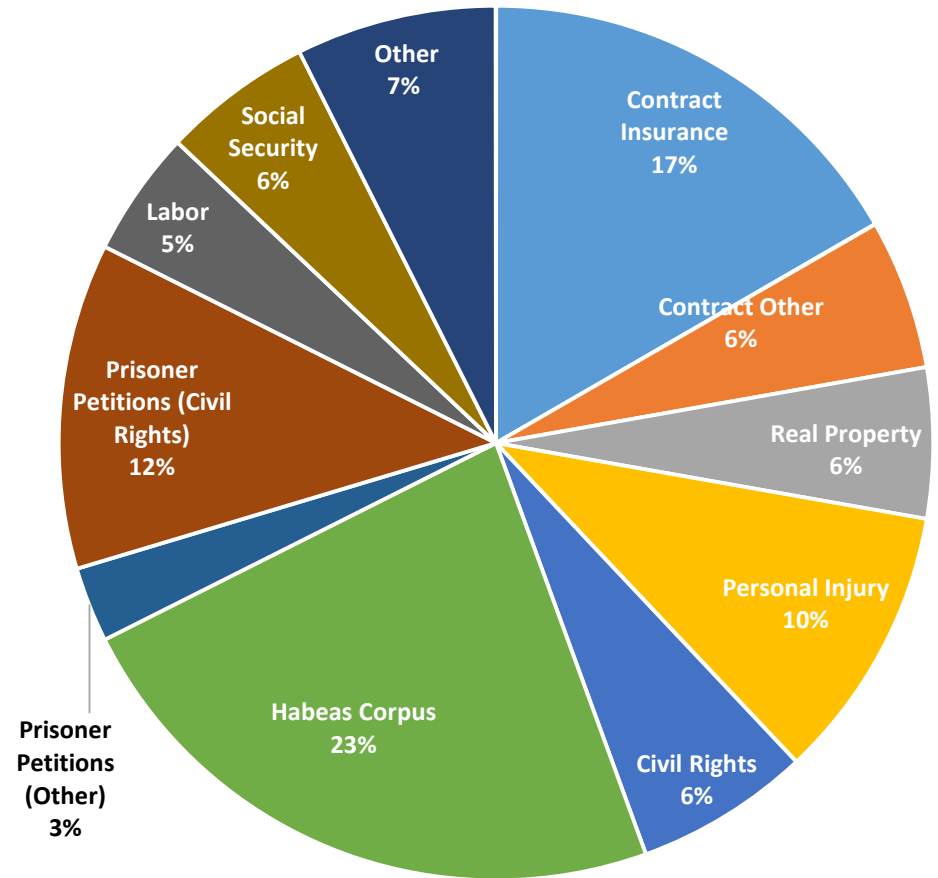




# Great Falls - Civil Case Composition

## Calendar Year 2015

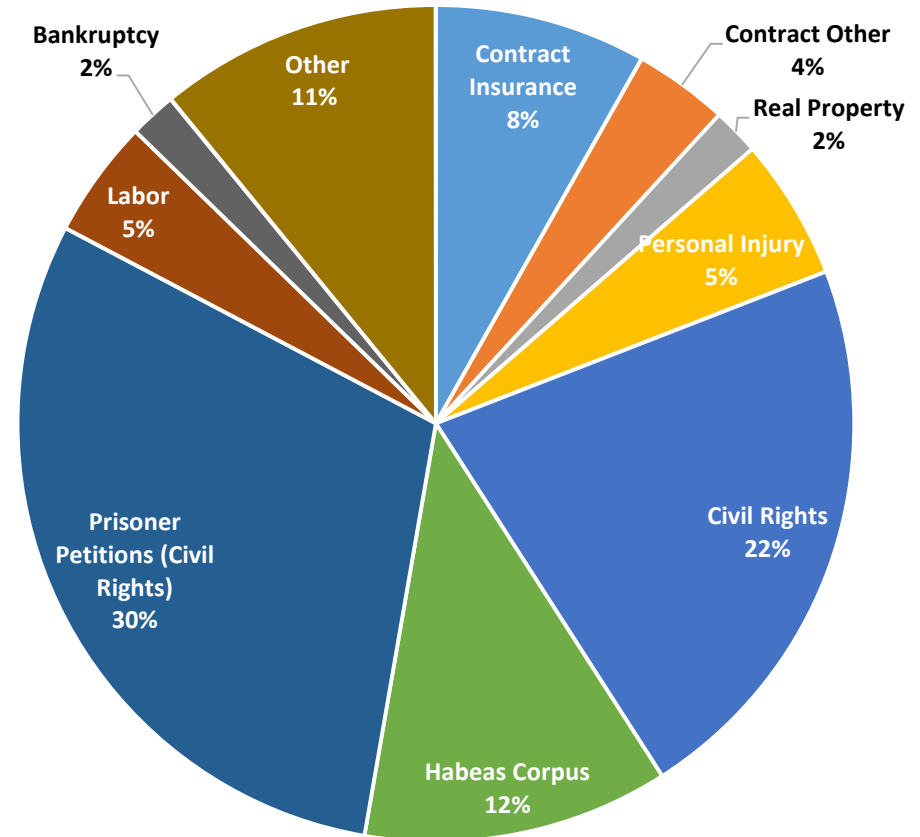
	# of Cases	%
Habeas Corpus	25	23%
Contract Insurance	18	17%
Prisoner Petitions (Civil Rights)	13	12%
Personal Injury	11	10%
Other	8	7%
Civil Rights	7	6%
Contract Other	6	6%
Real Property	6	6%
Social Security	6	6%
Labor	5	5%
Prisoner Petitions (Other)	3	3%
Total Cases	108	



# Helena - Civil Case Composition

Calendar Year 2015

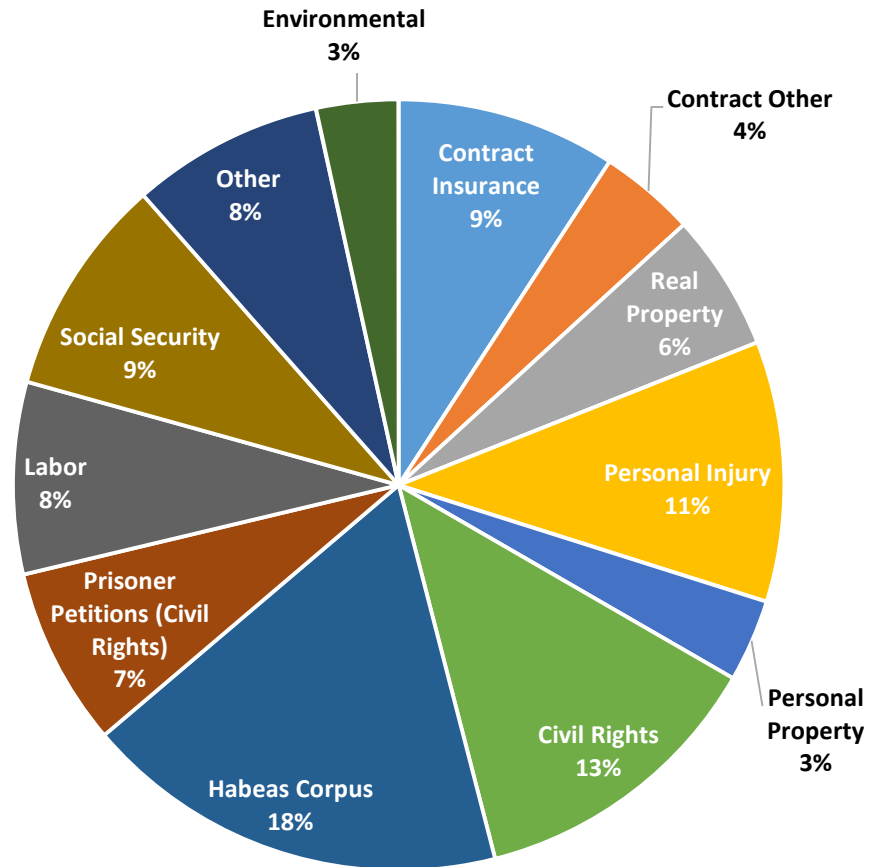
	# of Cases	%
Prisoner Petitions (Civil Rights)	33	30%
Civil Rights	24	22%
Habeas Corpus	13	12%
Other	12	11%
Contract Insurance	9	8%
Personal Injury	6	5%
Labor	5	5%
Contract Other	4	4%
Real Property	2	2%
Bankruptcy	2	2%
Total Cases	110	



# Missoula - Civil Case Composition

## Calendar Year 2015

	# of Cases	%
Habeas Corpus	31	18%
Civil Rights	22	13%
Personal Injury	19	11%
Contract Insurance	16	9%
Social Security	16	9%
Labor	14	8%
Other	14	8%
Prisoner Petitions (Civil Rights)	13	7%
Real Property	10	6%
Contract Other	7	4%
Personal Property	6	3%
Environmental	6	3%
<b>Total Cases</b>	<b>174</b>	



# Billings - Civil Case Composition

Calendar Year 2015

	# of Cases	%
Habeas Corpus	26	19%
Civil Rights	17	12%
Prisoner Petitions (Civil Rights)	17	12%
Contract Insurance	17	12%
Personal Injury	15	11%
Labor	14	10%
Other	13	9%
Contract Other	6	4%
Property Rights	4	3%
Real Property	3	2%
Personal Property	3	2%
Bankruptcy	3	2%
Total Cases	138	

